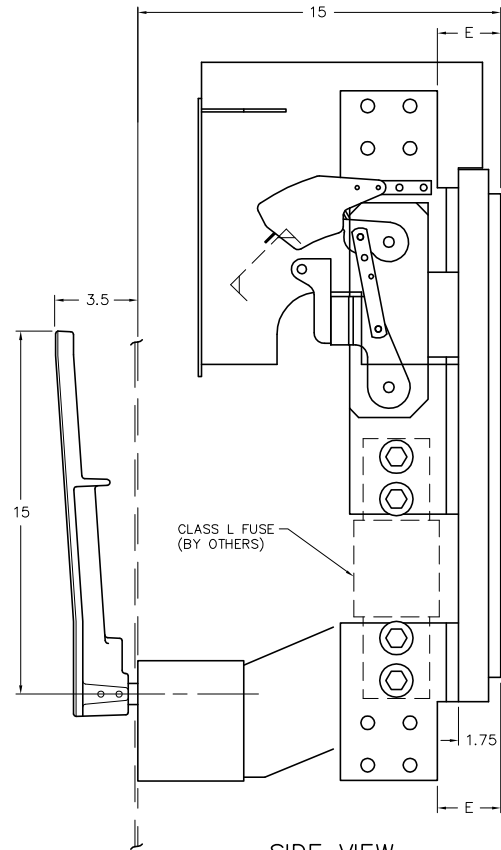
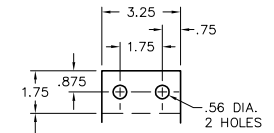


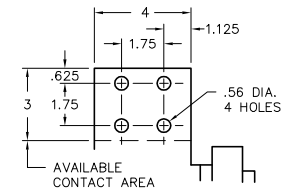
FRONT VIEW



SIDE VIEW



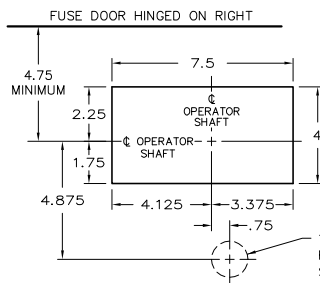
AVAILABLE CONTACT AREA  
800 A. TERMINAL



AVAILABLE CONTACT AREA  
1200-2000 A. TERM.

VENTILATION

WHEN THE SWITCH IS TOTALLY ENCLOSED, VENTILATING LOUVERS MUST BE PROVIDED YIELDING A MINIMUM OPEN AREA OF "H" SQUARE INCHES NEAR THE TOP OF THE ENCLOSURE, AND "H" SQUARE INCHES NEAR THE BOTTOM OF THE ENCLOSURE.



RECOMMENDED FRONT CUT-OUT

OPERATOR DETAILS

FOR OPERATOR DETAILS AND ALTERNATE FRONT CUT-OUTS, REFER TO THE FOLLOWING DRAWINGS:

- O-1023A MANUAL OPERATOR
- O-1090A SHUNT TRIP OPERATOR

KEY INTERLOCK

KEY INTERLOCK SPECIFICATIONS FOR SWITCHES EQUIPPED WITH KEY INTERLOCK PROVISIONS ARE:

- .375 BOLT PROJECTION WHEN WITHDRAWN
- KIRK TYPE B
- SUPERIOR TYPE B6003

|        | AMP  | CATALOG NUMBER * | NET WT. | A   | B    | C    | D    | E     | H          |
|--------|------|------------------|---------|---|------|------|------|-------|------------|
| 3-POLE | 800  | <b>WL367</b>     | 120 LBS | 25.75   | 2    | 1.75 | .375 | 2.5   | NONE       |
|        | 1200 | <b>WL368</b>     | 130 LBS | 28.5  | 3.25 | 3.25 | .375 | 2.5   | NONE       |
|        | 1600 | <b>WL369</b>     | 135 LBS | 28.5  | 3.25 | 3.25 | .375 | 2.5   | 60 SQ. IN. |
|        | 2000 | <b>WL3610</b>    | 150 LBS | 28.5  | 3.25 | 3.25 | .5   | 2.625 | 60 SQ. IN. |
| 2-POLE | 800  | <b>WL267</b>     | 105 LBS | DIMENSIONS ARE SAME AS 3-P. EXCEPT OMIT CENTER POLE |      |      |      |       |            |
|        | 1200 | <b>WL268</b>     | 110 LBS |   |      |      |      |       |            |
|        | 1600 | <b>WL269</b>     | 115 LBS |   |      |      |      |       |            |
|        | 2000 | <b>WL2610</b>    | 125 LBS |   |      |      |      |       |            |

\* OPTIONAL SHUNT TRIP, ADD SUFFIX -ST

SERIES WL

800-2000 AMP, 2 & 3 POLE, 600 VAC  
CLASS L FUSIBLE SWITCH

|                              |              |                |
|------------------------------|--------------|----------------|
| SCALE:                       | APPROVED BY: | DRAWN BY JAE   |
| DATE: 1-5-93                 |              | REVISED 2      |
| <b>boltswitch, inc.</b>      |              | DRAWING NUMBER |
| CRYSTAL LAKE, ILLINOIS 60014 |              | O-1526         |